

Discharge Measurement Summary

Site name Sodhouse3
Site number 06
Operator(s) RBrannan
File name Sodhouse3_20230605-152801.ft
Comment

Start time	6/5/2023 2:06 PM	Sensor type	Top Setting
End time	6/5/2023 3:25 PM	Handheld serial number	FT2H2219029
Start location latitude	43.250	Probe serial number	FT2P2219014
Start location longitude	-118.859	Probe firmware	1.30
Calculations engine	FlowTracker2	Handheld software	1.7

# Stations	Avg interval (s)	Total discharge (m³/s)
26	40	0.9723

Total width (m)	Total area (m²)	Wetted Perimeter (m)
5.151	3.27460	5.767

Mean SNR (dB)	Mean depth (m)	Mean velocity (m/s)
53	0.636	0.2969

Mean temp (°C)	Max depth (m)	Max velocity (m/s)
19.396	1.097	0.4648

Discharge Uncertainty		
Category	ISO	IVE
Accuracy	1.0%	1.0%
Depth	0.1%	0.9%
Velocity	0.4%	2.2%
Width	0.1%	0.1%
Method	0.9%	
# Stations	2.0%	
Overall	2.4%	2.6%

Discharge equation	Mid Section
Discharge uncertainty	IVE
Discharge reference	Rated

Data Collection Settings	
Salinity	0.000 PSS-78
Temperature	-
Sound speed	-
Mounting correction	0.000 %

Summary overview

No changes were made to this file
Quality control warnings



Discharge Measurement Summary

Site name Sodhouse3
Site number 06
Operator(s) RBrannan
File name Sodhouse3_20230605-152801.ft
Comment

Station Warning Settings

Station discharge OK

Station discharge < 5.00%

Station discharge caution

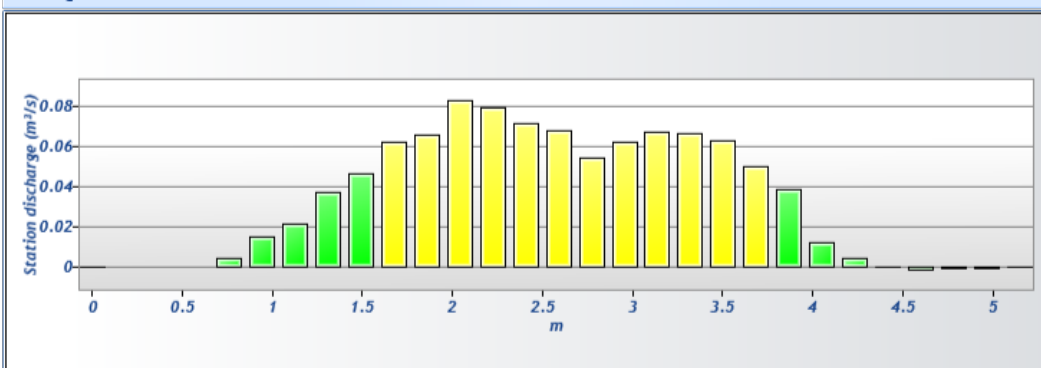
5.00% >= Station discharge < 10.00%

Station discharge warning

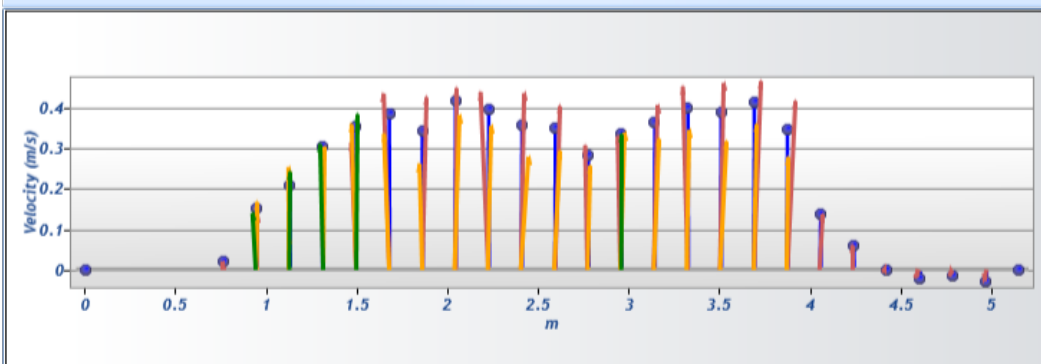
Station discharge >= 10.00%



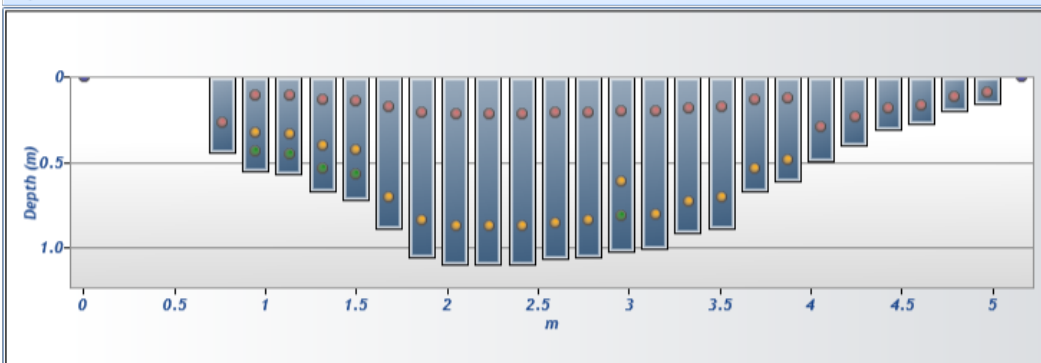
Discharge chart

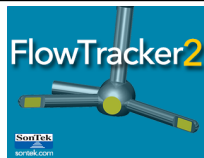


Velocity chart



Depth chart

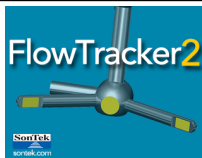




Discharge Measurement Summary

Site name Sodhouse3
Site number 06
Operator(s) RBrannan
File name Sodhouse3_20230605-152801.ft
Comment

Measurement results													
St#	Time	Location (m)	Method	Depth (m)	%Depth	Measured Depth (m)	Samples	Velocity (m/s)	Correction	Mean Velocity (m/s)	Area (m²)	Flow (m³/s)	%Q
25	3:25 PM	0.000	None	0.000	0.0000	0.000	0	0.0000		0.0216	0.00000	0.0000	0.00 ✓
24	3:22 PM	0.762	0.6	0.442	0.6000	0.265	80	0.0216	1.0000	0.0216	0.20880	0.0045	0.46 ✓
23	3:16 PM	0.945	0.2/0.6/0.8	0.549	0.2000	0.110	80	0.1376	1.0000	0.1531	0.10034	0.0154	1.58 ✓
23	3:16 PM	0.945	0.2/0.6/0.8	0.549	0.6000	0.329	80	0.1673	1.0000	0.1531	0.10034	0.0154	1.58 ✓
23	3:16 PM	0.945	0.2/0.6/0.8	0.549	0.8000	0.439	80	0.1401	1.0000	0.1531	0.10034	0.0154	1.58 ✓
22	3:12 PM	1.128	0.2/0.6/0.8	0.564	0.2000	0.113	80	0.0824	1.0000	0.2076	0.10312	0.0214	2.20 ✓
22	3:12 PM	1.128	0.2/0.6/0.8	0.564	0.6000	0.338	80	0.2533	1.0000	0.2076	0.10312	0.0214	2.20 ✓
22	3:12 PM	1.128	0.2/0.6/0.8	0.564	0.8000	0.451	80	0.2415	1.0000	0.2076	0.10312	0.0214	2.20 ✓
21	3:09 PM	1.311	0.2/0.6/0.8	0.671	0.2000	0.134	80	0.3025	1.0000	0.3049	0.12263	0.0374	3.85 ✓
21	3:09 PM	1.311	0.2/0.6/0.8	0.671	0.6000	0.402	80	0.3038	1.0000	0.3049	0.12263	0.0374	3.85 ✓
21	3:09 PM	1.311	0.2/0.6/0.8	0.671	0.8000	0.536	80	0.3096	1.0000	0.3049	0.12263	0.0374	3.85 ✓
20	3:04 PM	1.494	0.2/0.6/0.8	0.716	0.2000	0.143	80	0.3133	1.0000	0.3533	0.13099	0.0463	4.76 ✓
20	3:04 PM	1.494	0.2/0.6/0.8	0.716	0.6000	0.430	80	0.3584	1.0000	0.3533	0.13099	0.0463	4.76 ✓
20	3:04 PM	1.494	0.2/0.6/0.8	0.716	0.8000	0.573	80	0.3831	1.0000	0.3533	0.13099	0.0463	4.76 ✓
19	3:01 PM	1.676	0.2/0.8	0.884	0.2000	0.177	80	0.4342	1.0000	0.3847	0.16165	0.0622	6.40 ✓
19	3:01 PM	1.676	0.2/0.8	0.884	0.8000	0.707	80	0.3352	1.0000	0.3847	0.16165	0.0622	6.40 ✓
18	2:56 PM	1.859	0.2/0.8	1.052	0.2000	0.210	80	0.4249	1.0000	0.3434	0.19231	0.0660	6.79 ✓
18	2:56 PM	1.859	0.2/0.8	1.052	0.8000	0.841	80	0.2618	1.0000	0.3434	0.19231	0.0660	6.79 ✓
17	2:54 PM	2.042	0.2/0.8	1.097	0.2000	0.219	80	0.4476	1.0000	0.4148	0.20067	0.0832	8.56 ✓
17	2:54 PM	2.042	0.2/0.8	1.097	0.8000	0.878	80	0.3820	1.0000	0.4148	0.20067	0.0832	8.56 ✓
16	2:51 PM	2.225	0.2/0.8	1.097	0.2000	0.219	80	0.4380	1.0000	0.3964	0.20067	0.0795	8.18 ✓
16	2:51 PM	2.225	0.2/0.8	1.097	0.8000	0.878	80	0.3547	1.0000	0.3964	0.20067	0.0795	8.18 ✓
15	2:49 PM	2.408	0.2/0.8	1.097	0.2000	0.219	80	0.4353	1.0000	0.3572	0.20067	0.0717	7.37 ✓
15	2:49 PM	2.408	0.2/0.8	1.097	0.8000	0.878	80	0.2791	1.0000	0.3572	0.20067	0.0717	7.37 ✓
14	2:44 PM	2.591	0.2/0.8	1.067	0.2000	0.213	80	0.4032	1.0000	0.3484	0.19510	0.0680	6.99 ✓
14	2:44 PM	2.591	0.2/0.8	1.067	0.8000	0.853	80	0.2936	1.0000	0.3484	0.19510	0.0680	6.99 ✓
13	2:39 PM	2.774	0.2/0.8	1.052	0.2000	0.210	80	0.3069	1.0000	0.2819	0.19231	0.0542	5.58 ✓
13	2:39 PM	2.774	0.2/0.8	1.052	0.8000	0.841	80	0.2569	1.0000	0.2819	0.19231	0.0542	5.58 ✓
12	2:35 PM	2.957	0.2/0.6/0.8	1.021	0.2000	0.204	80	0.3295	1.0000	0.3353	0.18674	0.0626	6.44 ✓
12	2:35 PM	2.957	0.2/0.6/0.8	1.021	0.6000	0.613	80	0.3387	1.0000	0.3353	0.18674	0.0626	6.44 ✓
12	2:35 PM	2.957	0.2/0.6/0.8	1.021	0.8000	0.817	80	0.3341	1.0000	0.3353	0.18674	0.0626	6.44 ✓
11	2:32 PM	3.139	0.2/0.8	1.006	0.2000	0.201	80	0.4066	1.0000	0.3647	0.18395	0.0671	6.90 ✓
11	2:32 PM	3.139	0.2/0.8	1.006	0.8000	0.805	80	0.3227	1.0000	0.3647	0.18395	0.0671	6.90 ✓
10	2:29 PM	3.322	0.2/0.8	0.914	0.2000	0.183	80	0.4515	1.0000	0.3983	0.16723	0.0666	6.85 ✓
10	2:29 PM	3.322	0.2/0.8	0.914	0.8000	0.732	80	0.3451	1.0000	0.3983	0.16723	0.0666	6.85 ✓
9	2:23 PM	3.505	0.2/0.8	0.884	0.2000	0.177	80	0.4605	1.0000	0.3886	0.16165	0.0628	6.46 ✓
9	2:23 PM	3.505	0.2/0.8	0.884	0.8000	0.707	80	0.3167	1.0000	0.3886	0.16165	0.0628	6.46 ✓
8	2:20 PM	3.688	0.2/0.8	0.671	0.2000	0.134	80	0.4648	1.0000	0.4116	0.12263	0.0505	5.19 ✓
8	2:20 PM	3.688	0.2/0.8	0.671	0.8000	0.536	80	0.3585	1.0000	0.4116	0.12263	0.0505	5.19 ✓
7	2:16 PM	3.871	0.2/0.8	0.610	0.2000	0.122	80	0.4159	1.0000	0.3470	0.11148	0.0387	3.98 ✓
7	2:16 PM	3.871	0.2/0.8	0.610	0.8000	0.488	80	0.2781	1.0000	0.3470	0.11148	0.0387	3.98 ✓
6	2:15 PM	4.054	0.6	0.488	0.6000	0.293	80	0.1372	1.0000	0.1372	0.08919	0.0122	1.26 ✓
5	2:13 PM	4.237	0.6	0.396	0.6000	0.238	80	0.0609	1.0000	0.0609	0.07246	0.0044	0.45 ✓
4	2:12 PM	4.420	0.6	0.305	0.6000	0.183	80	-0.0010	1.0000	-0.0010	0.05574	-0.0001	-0.01 ✓
3	2:10 PM	4.602	0.6	0.274	0.6000	0.165	80	-0.0204	1.0000	-0.0204	0.05017	-0.0010	-0.11 ✓
2	2:09 PM	4.785	0.6	0.198	0.6000	0.119	80	-0.0153	1.0000	-0.0153	0.03623	-0.0006	-0.06 ✓
1	2:06 PM	4.968	0.6	0.152	0.6000	0.091	80	-0.0291	1.0000	-0.0291	0.02787	-0.0008	-0.08 ✓
0	2:06 PM	5.151	None	0.000	0.0000	0.000	0	0.0000		-0.0291	0.00000	0.0000	0.00 ✓

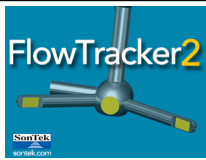


Discharge Measurement Summary

Site name Sodhouse3
Site number 06
Operator(s) RBrannan
File name Sodhouse3_20230605-152801.ft
Comment

Quality Control Settings	
Maximum depth change	50.00%
Maximum spacing change	100.00%
SNR threshold	10 dB
Standard error threshold	0.0100 m/s
Spike threshold	10.00%
Maximum velocity angle	20.0 deg
Maximum tilt angle	5.0 deg

Quality control warnings							
St#	Time	Location (m)	Method	Depth (m)	%Depth	Measured Depth (m)	Warnings
23	3:16 PM	0.945	0.2/0.6/0.8	0.549	0.2000	0.110	Stn Spacing > QC
23	3:16 PM	0.945	0.2/0.6/0.8	0.549	0.6000	0.329	Stn Spacing > QC
23	3:16 PM	0.945	0.2/0.6/0.8	0.549	0.8000	0.439	Stn Spacing > QC
22	3:12 PM	1.128	0.2/0.6/0.8	0.564	0.2000	0.113	Stn Spacing > QC
22	3:12 PM	1.128	0.2/0.6/0.8	0.564	0.6000	0.338	Stn Spacing > QC
22	3:12 PM	1.128	0.2/0.6/0.8	0.564	0.8000	0.451	Stn Spacing > QC
18	2:56 PM	1.859	0.2/0.8	1.052	0.2000	0.210	Standard Error > QC
18	2:56 PM	1.859	0.2/0.8	1.052	0.8000	0.841	Standard Error > QC
14	2:44 PM	2.591	0.2/0.8	1.067	0.2000	0.213	Standard Error > QC
14	2:44 PM	2.591	0.2/0.8	1.067	0.8000	0.853	Standard Error > QC
3	2:10 PM	4.602	0.6	0.274	0.6000	0.165	Velocity Angle > QC
1	2:06 PM	4.968	0.6	0.152	0.6000	0.091	Velocity Angle > QC



Discharge Measurement Summary

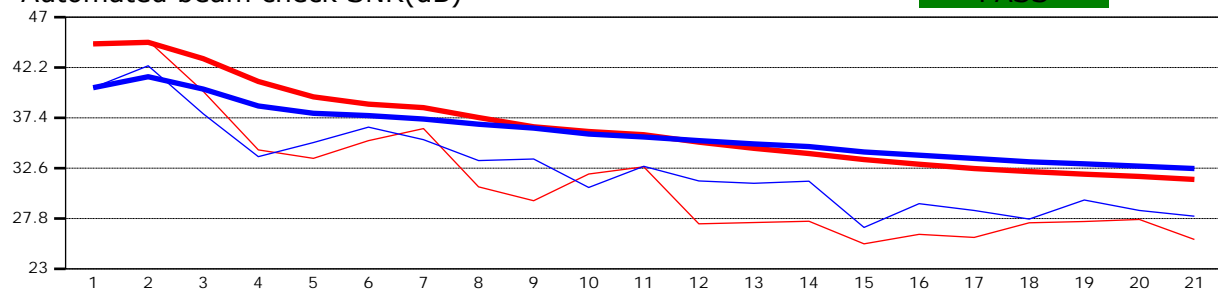
Site name Sodhouse3
Site number 06
Operator(s) RBrannan
File name Sodhouse3_20230605-152801.ft
Comment

Beam 1	
Beam 2	

Automated beam check Start time 6/5/2023 2:03:36 PM

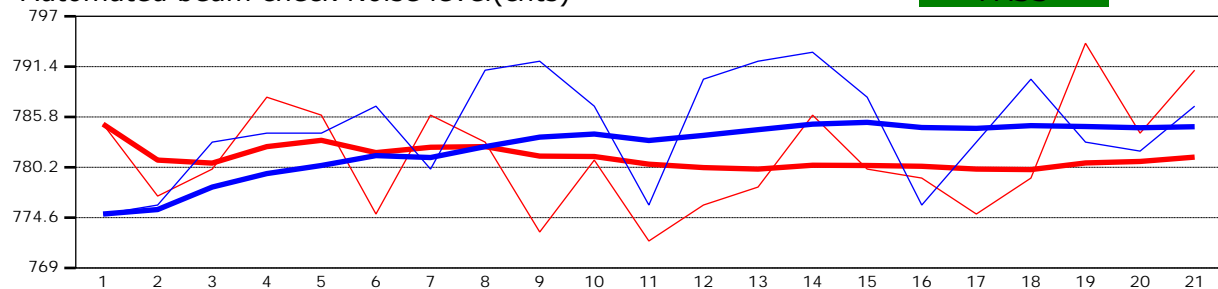
Automated beam check SNR(dB)

PASS



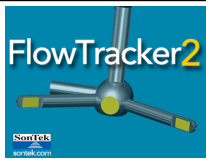
Automated beam check Noise level(cnts)

PASS



Automated beam check Quality control warnings

Peak Location > QC



Discharge Measurement Summary

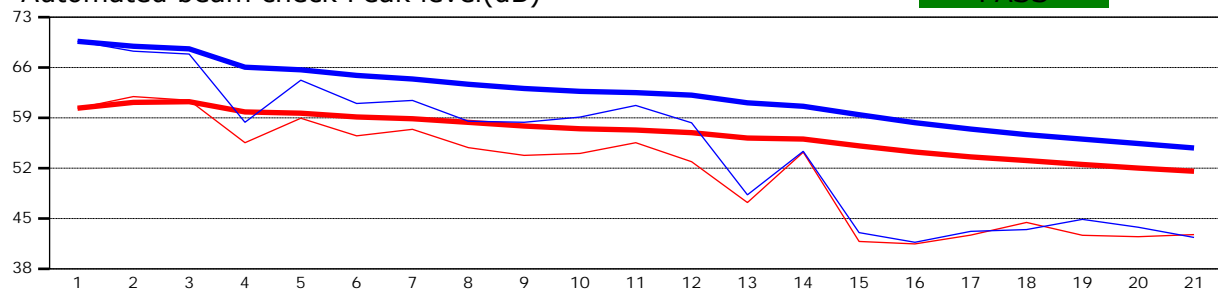
Site name Sodhouse3
Site number 06
Operator(s) RBrannan
File name Sodhouse3_20230605-152801.ft
Comment

Beam 1	
Beam 2	

Automated beam check Start time 6/5/2023 2:03:36 PM

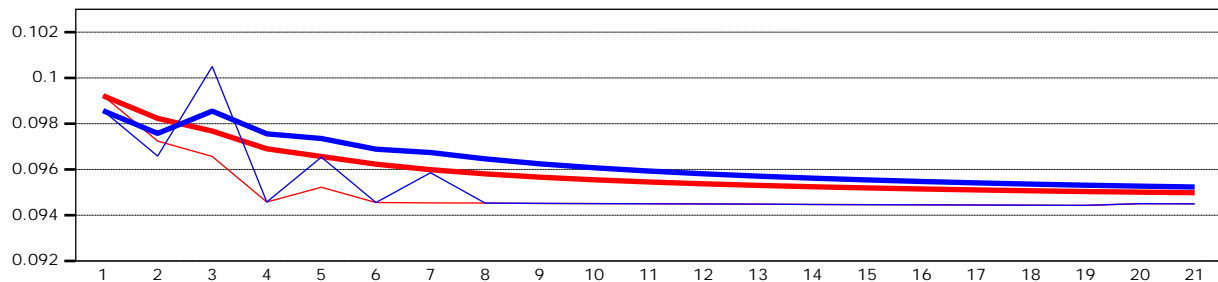
Automated beam check Peak level(dB)

PASS



Automated beam check Peak position(m)

FAIL



Automated beam check Quality control warnings

Peak Location > QC